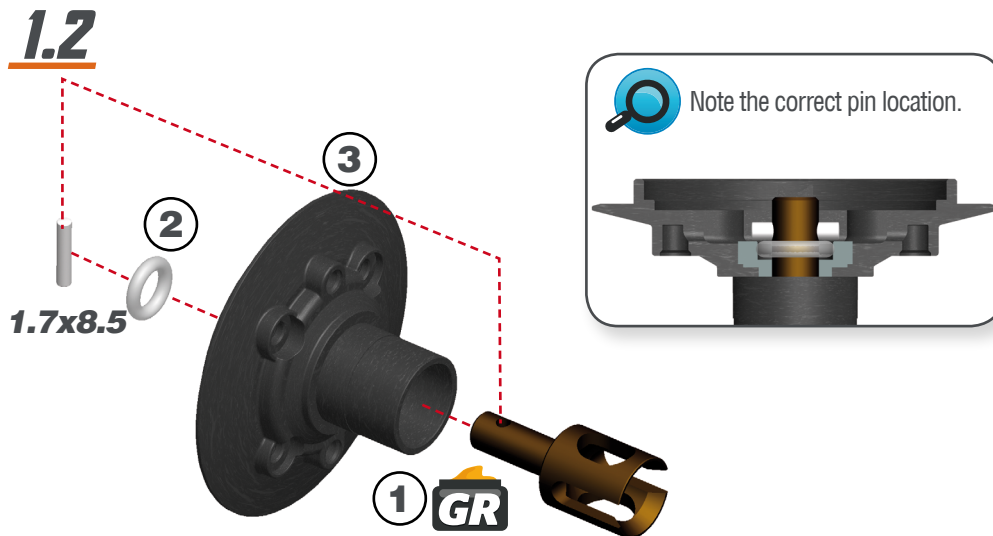
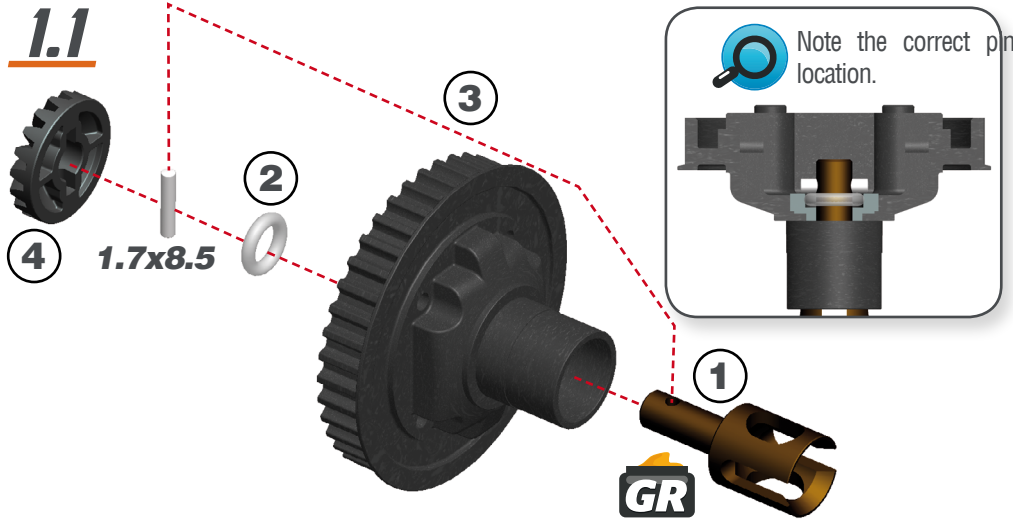


STEP 1 REAR DIFF BAG

! You can apply the V2 rear differential without further modifications.

To be able to use the new front differential, you also need to purchase and apply the new pully-set # 804396 and new sidebelt #804397 because the overall gearing has changed.



1.75x8.5

STEP 2

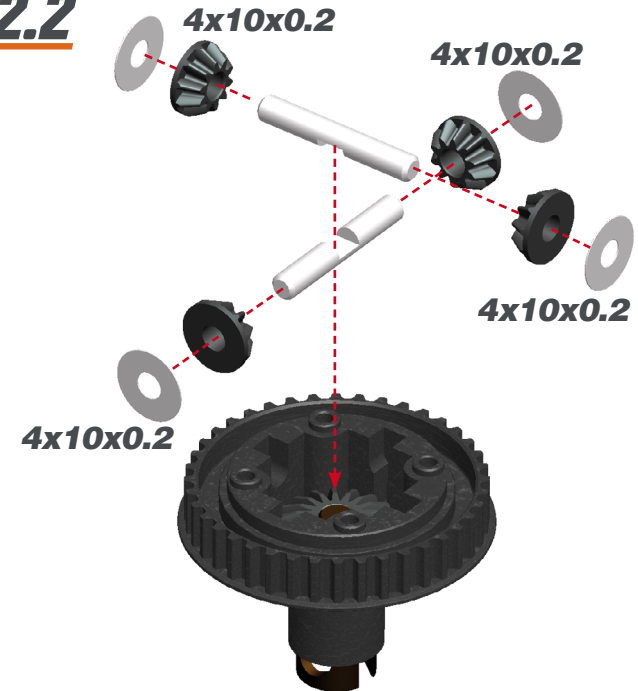
2.1

Add just enough oil to cover the large gear before assembling the small satellite gears and cross pins.

For the correct cst value please check the default setupsheet.




2.2



4x10x0.2

STEP 3

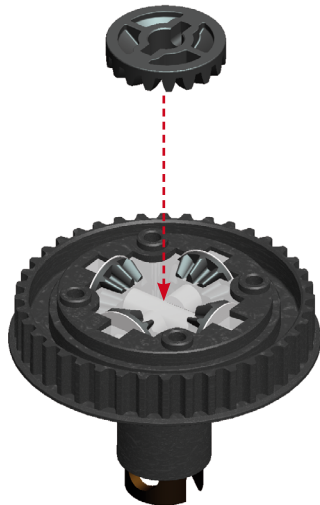
3.1

 Fill the differential with silicone oil 1 mm above the crosspin, do NOT overfill. For the correct cst value please check the default setupsheet.



3.2

 Add the big gear.



STEP 4

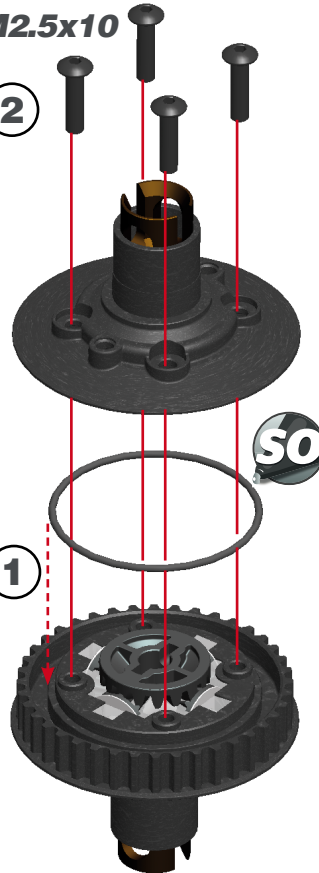


1- Fit the o-ring (see detail view picture in yellow) in the slot of the bottom case using some silicone oil to hold it in position.

2- Mount the diff top-case on the lower case, make sure to follow below Detail View, and tighten the screws.

M2.5x10

2

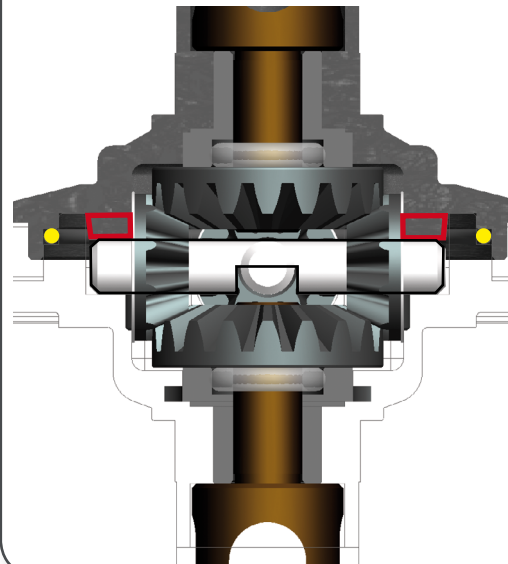


1



HOW TO CLOSE THE REAR DIFF

The rear diff top case has two protrusions (see below picture in red) to hold the gear/diff shafts in the correct position. The protrusion should hold the upper shaft as it will hold the bottom shaft.



STEP 5

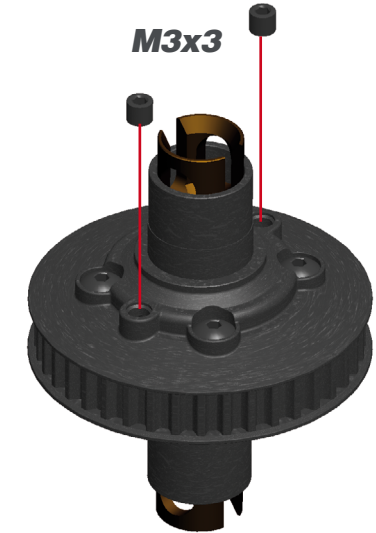


1- Allow the excess of oil to escape through the escape holes.

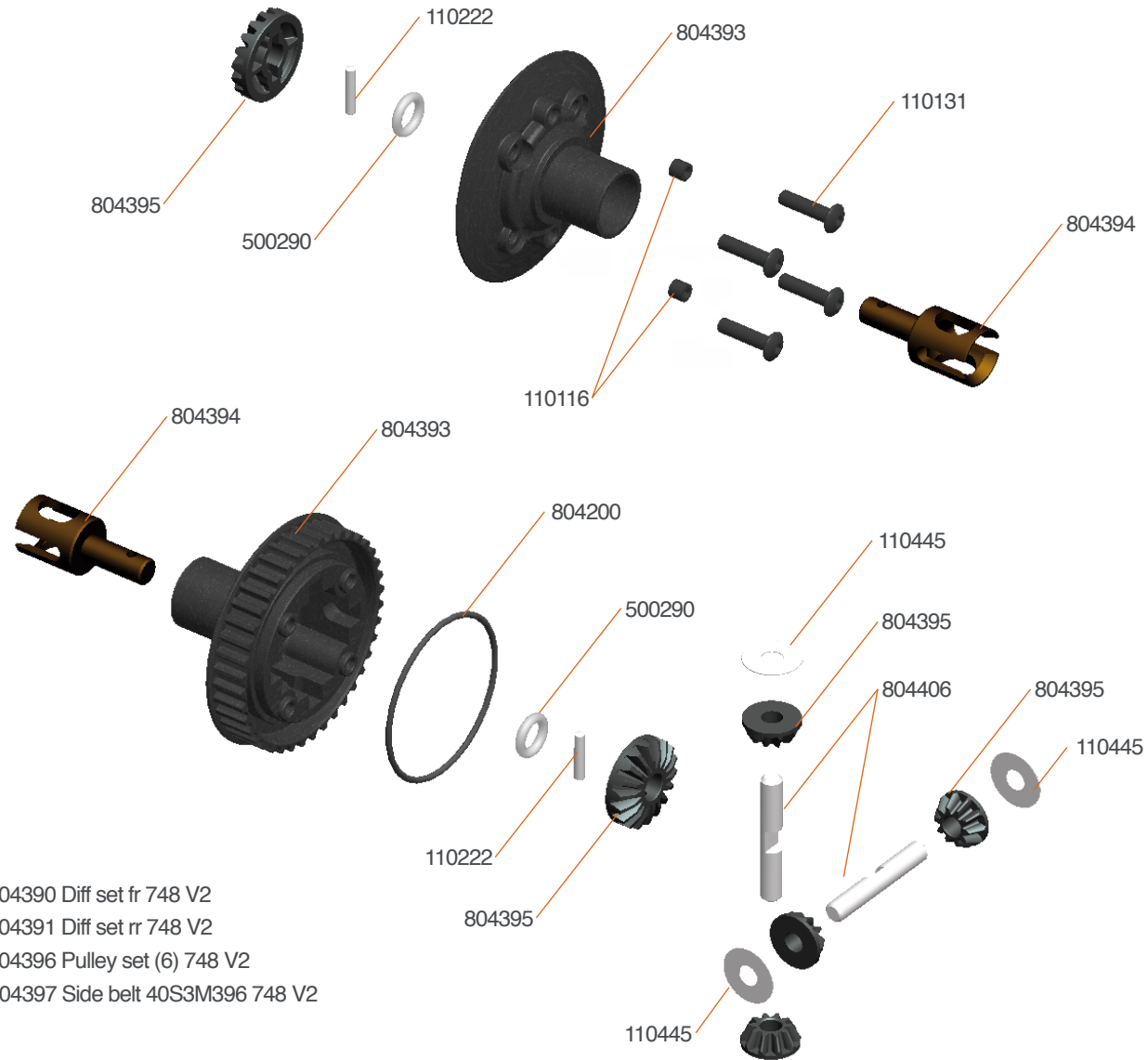
2- Close the holes with the 3x3 setscrews. Tighten carefully.

3- In case the diff feels too hard remove the M3x3 setscrews and let some oils to escape and colse again. Tighten carefully.

M3x3



EXPLODED VIEW DIFF SET RR 748 V2 #804391



- 804390 Diff set fr 748 V2
- 804391 Diff set rr 748 V2
- 804396 Pulley set (6) 748 V2
- 804397 Side belt 40S3M396 748 V2