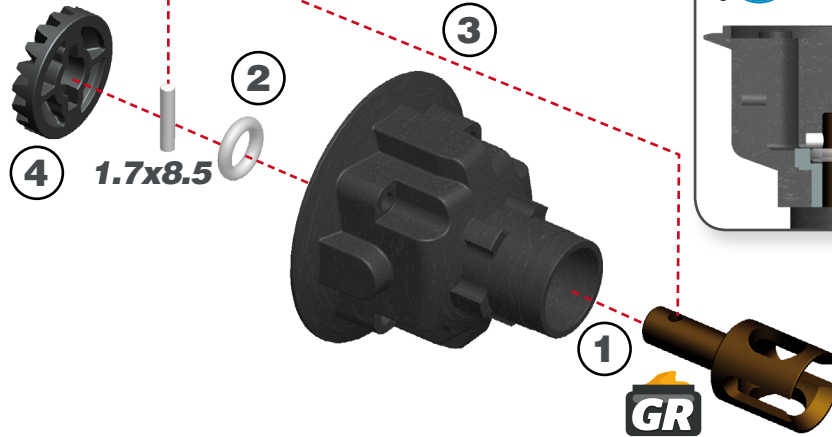


## STEP 1 FRONT DIFF BAG

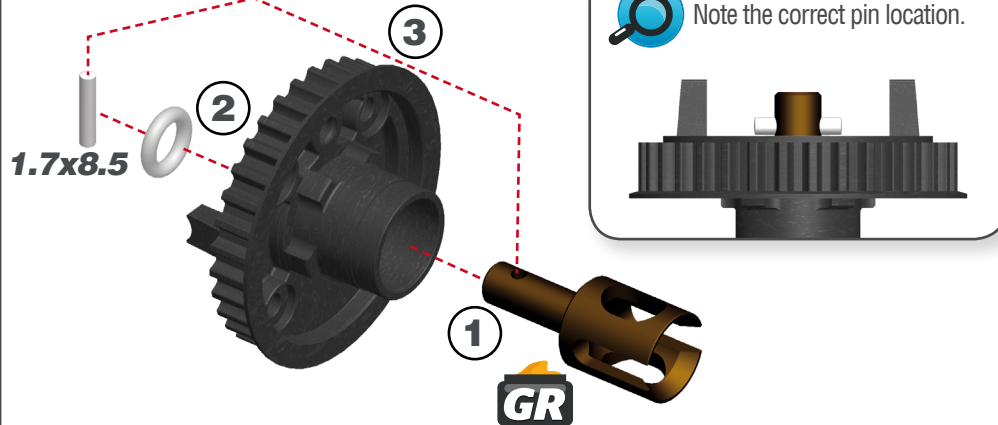
## STEP 2

**!** To be able to use the new front differential, you also need to purchase and apply the new pulley-set # 804396 and new sidebelt #804397 because the overall gearing has changed.

### 1.1



### 1.2



1.75x8.5

### 2.1

Add just enough oil to cover the large gear before assembling the small satellite gears and cross pins.

For the correct cst value please check the default setupsheet.

50



### 2.2



4x10x0.2

# STEP 3

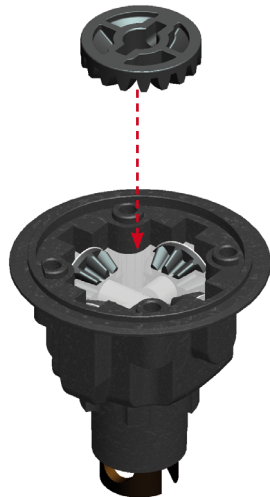
## 3.1

**!** Fill the differential with silicone oil 1 mm above the crosspin, do NOT overfill. For the correct cst value please check the default setupsheet.



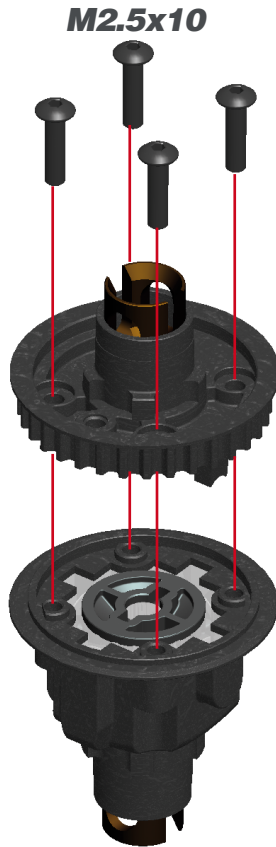
## 3.2

**!** Add the big gear.



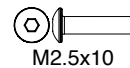
# STEP 4

**!** Mount the diff top-case on the lower case, make sure to follow below Detail View, and tighten the screws.



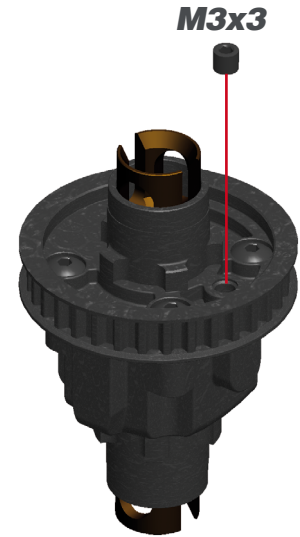
**HOW TO CLOSE THE FRONT DIFF**

The front diff top case has two protrusions (see below picture in red) to hold the gear/diff shafts in the correct position. The two protrusions press on the upper shaft and thus secure the shafts in position.



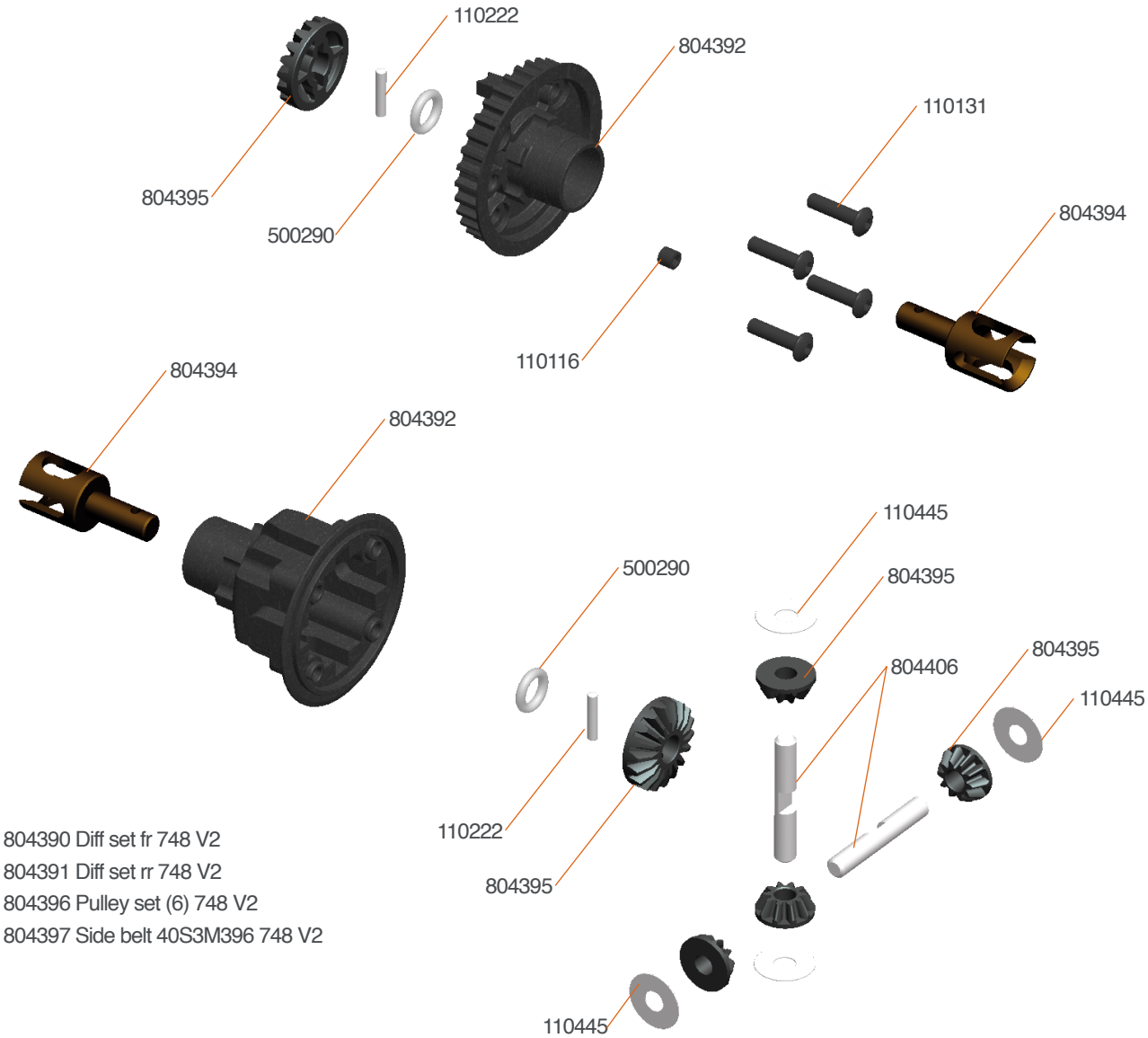
# STEP 5

- !** 1- Allow the excess of oil to escape through the escape hole.
- 2- Close the hole with the 3x3 setscrew. Tighten carefully.
- 3- In case the diff feels too hard remove the M3x3 set screw and let some oils to escape and colse again. Tighten carefully.



# EXPLODED VIEW DIFF SET FR 748 V2 #804390

# 748<sub>EVO</sub>



- 804390 Diff set fr 748 V2
- 804391 Diff set rr 748 V2
- 804396 Pulley set (6) 748 V2
- 804397 Side belt 40S3M396 748 V2